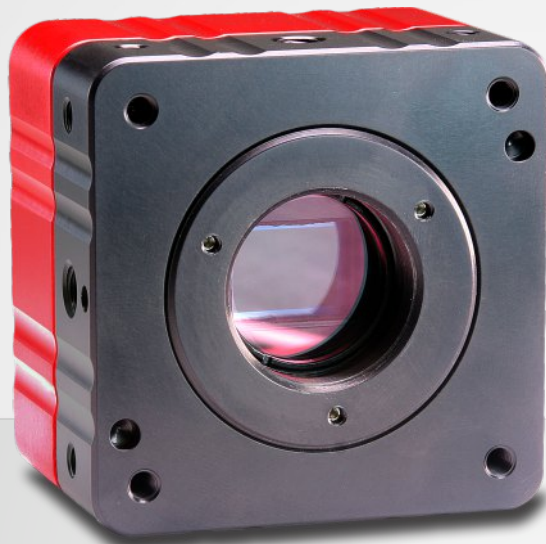


# VICTOREM™ 4KSDI-MINI



## 12G-SDI HDR CAMERAS

### APPLICATIONS

Aircraft and Vehicle Recording

Test Range Instrumentation

Specialty Video Production

Security and Surveillance



### FEATURES INCLUDE:

- High-quality Sony CMOS Sensors
- 12G / 6G / 3G / HD-SDI Output Formats
- 4K/UHD output or scaled 2K/HD output
- C-mount or optional Active EF-mount
- 10-bit 4:2:2, 4:4:4, or RAW Output
- Compact One-Piece Rugged Design
- Synchronize Multiple Cameras via Tri-Level Sync
- Easy to Configure via On Screen Menu

**IOI**  
IO INDUSTRIES

# SPECIFICATIONS

<b>Camera Model</b>	<b>4KSDI-Mini</b>	<b>4KSDI-Mini RS</b>
<b>Sensor</b>	Sony Pregius IMX305	Sony Exmor-R IMX183
<b>Output Modes</b>	4K, UHD, 2K, 1080p, 1080i, up to 60 fps	
<b>Optical Format</b>	4K/2K: 1" (16.0mm diagonal) UHD/1080p: approx. 1" (15.2mm diagonal)	4K/2K: Approx. 2/3" (11.1mm diagonal) UHD/1080p: 2/3" (10.6mm diagonal)
<b>Sensor Type</b>	CMOS w. global electronic shutter	CMOS w. rolling shutter
<b>Sensor Options</b>	Color (Bayer) or Monochrome	
<b>Dynamic Range</b>	73.6 dB	72.0 dB
<b>Output Interface</b>	Single-Link 12G/6G/3G/HD-SDI, Dual-Link 3G-SDI, Quad-Link 3G-SDI (SMPTE ST 292/424/2081/2082)	
<b>Output Format</b>	10-bit 4:2:2(Y'Cb'Cr'), 4:4:4 (RGB) or RAW (Bayer)	
<b>Exposure Control</b>	Automatic (adjusts exposure, gain and/or iris if available) or manual exposure	
<b>Image Enhancement</b>	Gamma (1D LUTs), master pedestal control, adjustable sharpening	
<b>Color Control</b>	Auto white balance or calibrated presets, 3D LUTs, color correction matrix, RGB offsets, saturation control	
<b>Synchronization</b>	Tri-level sync input	
<b>Camera Configuration</b>	RS-485; use handheld remote for OSD, USB adapter for PC software or direct ASCII protocol	
<b>Mechanical/Electrical</b>		
<b>Dimensions</b>	62.0 mm x 62.0 mm x 42.1 mm	
<b>Lens Mount</b>	C-mount; optionally supporting Active EF-mount or DC Auto Iris lenses (see Ordering)	
<b>Camera Mounting Points</b>	All 4 sides: 1/4"-20 with 2x M4 x 0.7; Front Surface: 4x M4 x 0.7	
<b>Weight</b>	325g	
<b>Power Requirements</b>	7.5W, 7-19V DC	6.5W, 7-19V DC
<b>Operating Temperature</b>	-10°C to 50°C, 20-85% humidity (non-condensing)	
<b>Storage Temperature</b>	-40°C to 85°C, 10-90% humidity (non-condensing)	
<b>Operational Shock/Vibration</b>	Tested per MIL-STD-810G Method 516.6, 3-axis Shock 75G and Method 514.6, 3-axis Vibration Cat. 20	

## OUTPUT MODES

### Single-Link HD-SDI:

1080i 10-bit 4:2:2/RAW: 50, 59.94, 60  
 1080p 10-bit 4:2:2/RAW: 23.98, 24, 25, 29.97, 30  
 2K 10-bit 4:2:2/RAW: 23.98, 24, 25, 29.97, 30

### Single-Link 3G-SDI:

1080p 10-bit 4:2:2/RAW: 50, 59.94, 60  
 1080p 10-bit 4:4:4: 23.98, 24, 25, 29.97, 30  
 2K 10-bit 4:2:2/RAW: 47.95, 48, 50, 59.94, 60  
 2K 10-bit 4:4:4: 23.98, 24, 25, 29.97, 30

### Single-Link 6G-SDI or Dual-Link 3G-SDI:

UHD 10-bit 4:2:2/RAW: 23.98, 24, 25, 29.97, 30  
 4K 10-bit 4:2:2/RAW: 23.98, 24, 25, 29.97, 30

### Single-Link 12G-SDI or Quad-Link 3G-SDI:

UHD 10-bit 4:2:2/RAW: 50, 59.94, 60  
 UHD 10-bit 4:4:4: 23.98, 24, 25, 29.97, 30  
 4K 10-bit 4:2:2/RAW: 47.95, 48, 50, 59.94, 60  
 4K 10-bit 4:4:4/RAW: 23.98, 24, 25, 29.97, 30

## ORDERING

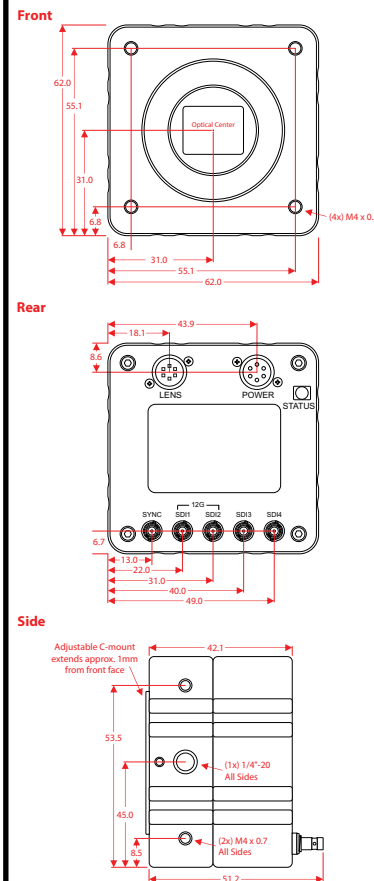
Part Number	Description
4KSDIMINI	Color camera, GS sensor, supports Active EF lens adapter
4KSDIMINID	Color camera, GS sensor, supports DC Auto Iris lens control
4KSDIMINIRS	Color camera, RS sensor, supports Active EF lens adapter
4KSDIMINIRSD	Color camera, RS sensor, supports DC Auto Iris lens control

For a complete camera kit with common accessories, add "KIT" to Part Number, ie. 4KSDIMINIKIT. Includes selected camera, CABVICBATT, ACPWRTPAP, 485HRMT, and CABUSB4852M.

## ACCESSORIES

Part Number	Description
VICPWRLIO	AC Power Adapter (Universal) with LEMO for RS485
CABVICBATT	Battery Power Cable with PowerTap connector and LEMO for RS485
ACPWRTPAP	AC Power Adapter (Universal) with PowerTap connector
485HRMT	Handheld remote control w. RS485 interface, for camera control from on-screen display
CABUSB4852M	USB to RS485 adapter cable, 2m, for camera control from PC software
CABLEMO3M	RS485 extension cable (LEMO to LEMO), 3m
ADAPTER-C2EF	Lens Mount Adapter, C-mount to Active EF-mount, requires CAB4KMINIAEF
CAB4KMINIAEF	Adapter cable, connects 4KSDI-Mini to ADAPTER-C2EF
CAB4KMINIDCI	Adapter cable, connects 4KSDI-Mini to DC Auto Iris Lens
4KMINIHSFAN	Heatsink and Fan Assembly

## MECHANICAL DIAGRAMS



Visit us at: [www.ioindustries.com](http://www.ioindustries.com)  
 15940 Robin's Hill Road  
 London, Ontario, Canada, N5V 0A4  
 Tel: +1 519 663 9570  
 Email: [sales@ioindustries.com](mailto:sales@ioindustries.com)

## LET'S STAY CONNECTED!



@IOINDUSTRIES



@IOINDUSTRIES



@IO-INDUSTRIES

Copyright © 2018 IO Industries Inc. Victorem is a trademark of IO Industries. All other trademarks are the property of their respective owners.

Datasheet Rev. 2.0 (1/26/2018)  
 Specifications subject to change without notice